

NAREiM

Becoming a
MEMBER

Driving enterprise growth and investment returns through real estate investment management benchmarking and best practice

NAREIM™ is the industry association dedicated to the business of real estate investment management. Founded in 1990, NAREIM (the National Association of Real Estate Investment Managers™) today represents real estate investment management firms with combined assets under management of more than \$3 trillion.

For more than 35 years, NAREIM has focused on organizational management strategy and best practices, delivering its value to members through benchmarking research and peer networking.

We are deliberately a small association to ensure truly candid conversations — and idea sharing — among peers, across our functional groups. You want to know how best to grow and scale your business. You want to know how your peers are doing the same. NAREIM is the place where those conversations take place.

NAREIM™ members represent a diverse group of real estate investment management professionals, organizations and strategies.

\$3tn

NAREIM members have \$3tn in collective gross AUM

\$8bn

The median AUM of a NAREIM member is \$8bn

\$34bn

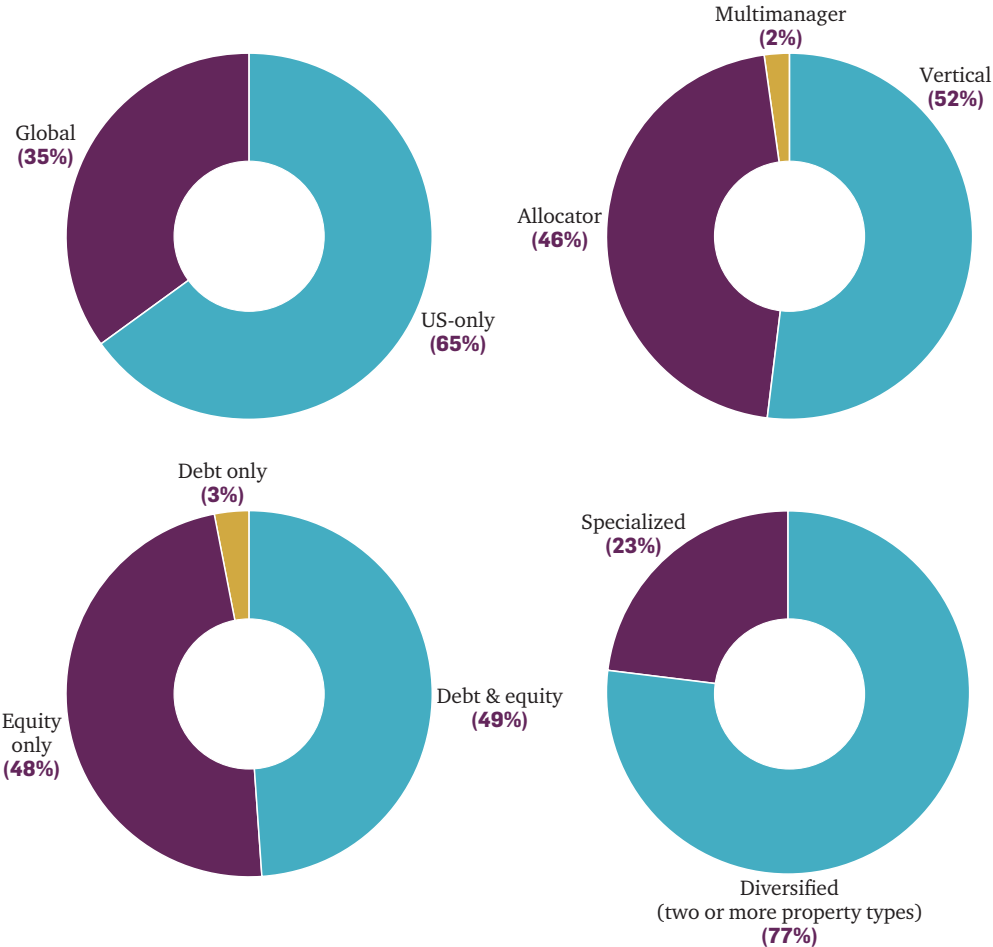
The average AUM of a NAREIM member is \$34bn

102

NAREIM has 102 corporate member firms

(as of March 2025)

TYPE OF MEMBERS



NAREIM

Delivering value for members through meetings & networking, benchmarking research and thought leadership.

NAREIM™ (the National Association of Real Estate Investment Managers™) is a small association for a reason — so you can candidly talk and network with your peers in the industry.



Each year, NAREIM delivers to every professional, at each of our member firms, the ability to participate in in-person and virtual meetings across 9 distinct functional groups.

NAREIM's functional groups cover the following functions:

- Architecture, Engineering & Development
- Asset Management
- Capital Raising & Investor Relations
- Data & Information Management
- Executive Officer
- Legal, Compliance & Risk
- Portfolio Management
- Sustainability
- Talent Management



Our meeting format is centered around small breakout group collaborative sessions where members:

- Review live case studies from fellow members.
- Evaluate solutions, live and together, during breakout groups and roundtable activities.
- Report back and share best practices with the peer group to be applied in the short, medium and longer term.

To see the latest meeting and networking schedule, visit: nareim.org/event

Making sense of data to drive enterprise research growth and investment returns through real estate investment management benchmarking and best practices.

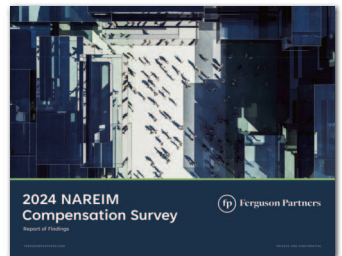
NAREIM™ produces four enterprise benchmarking research reports on an annual and biannual basis.

Compensation

The only industry survey providing over 400+ pages of individual position compensation reports, including base, bonus, long-term incentives, promote/carry, co-investment and benefits within real estate investment management, and the detailed compensation of 120+ different positions.

Released in annually September.

Published in partnership with Ferguson Partners.



Global Management

The only industry benchmark providing real estate investment management organizational, financial metrics, including EBITDA margins, expense ratios, YOY headcount and staffing/outsourcing trends.

Released annually in May.

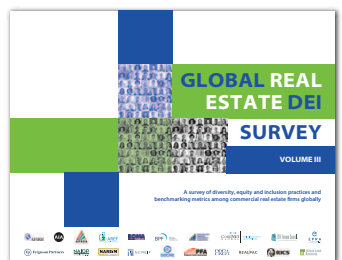
Published in partnership with Ferguson Partners.



DEI

The only corporate industry benchmark for DEI metrics and best practices in commercial real estate globally tracking diversity across gender and ethnicity across seniority and job functions globally, as well as DEI program strategies and practices. Produced in collaboration with 19 industry associations and Ferguson Partners.

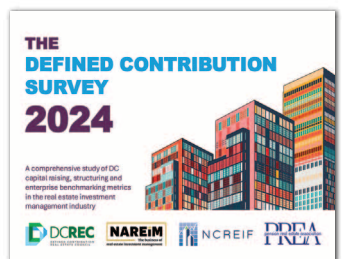
Released biennially in January.



Defined Contribution

Benchmarking research focused on defined contribution capital raising, liquidity and structuring best practices. Produced in collaboration with the DC Real Estate Council, NCREIF and PREA.

Released annually in September.



Member pulse surveys

NAREIM provides members the opportunity to ask peers questions on pressing organizational issues. Surveys of late include Bonus Strategies, ESG cost allocations, T&E expenses, tech spend & budgets, DEI vendor due diligence & reporting.

Members have the opportunity to contribute articles, advertise job openings, contact peers and nurture the next generation of real estate talent.

Resume Book & Jobs Board

NAREIM members can connect directly with hundreds of real estate and business undergraduate and graduate students from across the US through the Resume Book and the Jeff Barclays Fellows program as well as advertise open job positions on the NAREIM Jobs Board.

NAREIM Jeff Barclay Fellows Program

Named after the late Jeff Barclay, former NAREIM chairman, CIO of Clarion Partners and head of Goldman Sachs' real estate group, the NAREIM Jeff Barclay Fellows award is given to five outstanding graduate students each year. The program affords a unique learning and networking opportunity to attend the fall Executive Officer meeting, as well as other NAREIM functional meetings through the year, and the chance to be published in Dialogues magazine.

Peer group database

Members can directly reach out to their peers through attendee lists shared after each in-person and virtual meeting.

Meeting takeaways & articles

NAREIM also produces takeaway reports from meetings with actionable solutions to member challenges and discussions. Members also have the ability to contribute articles for distribution to NAREIM members.



Member committees

NAREIM's programming is led by NAREIM members. Having a small group of members help with this effort is an important piece of the NAREIM process and provides those involved with unique networking opportunities and a chance to learn directly from peers about best practices and innovation.

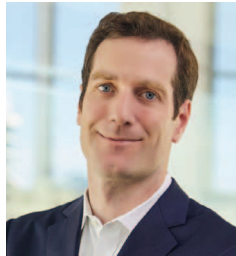
NAREIM Board of Directors (October 2024–September 2025)



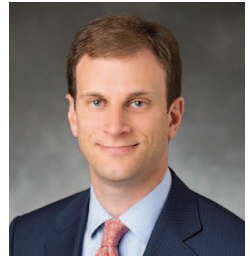
Chair:
Kristin Renaudin
Stockbridge Capital Group



Vice Chair:
Bryan Thornton
PCCP



Treasurer:
Tim Kessler
LaSalle Investment Management



Chair Emeritus:
Josh Myerberg
JPMorgan Asset Management



Michael Byrne
AEW Capital Management



Julie Ingersoll
CBRE Investment Management



Kathy Briscoe
Dermody Properties



Travis Pritchett
Harbert Management Corporation



Jeff Giller
StepStone Group



Molly Bordonaro,
The Green Cities Company



Tiffany Gherlone
UBS Realty Investors

Join NAREIM's committees that cover the following functions:

Executive Committees

- Board of Directors
- Compensation
- Defined Contribution
- Membership

Program Committees

- Architecture, Engineering & Development
- Asset Management
- Capital Raising & Investor Relations
- Data & Information Management
- Executive Officer
- Legal, Compliance & Risk
- Portfolio Management
- Sustainability
- Talent Management

NAREIM™ welcomes real estate investment management organizations to join our community.

MEMBER <i>Real estate investment managers</i>
Full access to all NAREIM programming, meetings & networking events, benchmarking research, member directory, member surveys/polls and member content.
Ability to post open job positions on the NAREIM Job's Board, write articles and access to the NAREIM annual Resume Book and Fellows program student resumes.
Participating members can access the Compensation Survey, Global Management Survey, DEI Survey and Defined Contribution Survey.
Annual dues: <i>Members with more than \$1bn funds under management*</i> : \$12,500 <i>Emerging members with less than \$1bn funds under management*</i> : \$6,250

* Funds under management is defined as the capital a manager has raised from institutional and/or individual investors, including dry powder. Funds Under Management = Net Asset Value (NAV) of investments plus uncalled committed capital plus cash.

Guidance:

1. *Investments in joint ventures:* Do not include capital not under direct control — i.e. if you split a deal with third parties or raised separate third-party capital to invest beside your investment as either a GP or LP.
2. *Co-invests:* Co-invests do count as Funds Under Management.
3. *Lenders:* Lenders should only account for capital raised and at work with no gross-up for back leverage on any loan.

UNDERWRITING MEMBER <i>Organizations that work with and support real estate investment managers</i>
Invitation to attend and participate in the planning committees for member meetings and virtual connections. Intimate, engaged networking with senior leaders across departments within real estate investment management firms. Note, NAREIM limits the number of underwriting member organizations that can join to ensure a strict ratio of managers to providers.
Receive the executive summaries of the Compensation Survey, Global Management Survey, DEI Survey and Defined Contribution Survey.
Full access to the member directory, meeting takeaways and member-initiated surveys and polls.
Annual dues: \$26,000



BOARD OF DIRECTORS

www.nareim.org/boardofdirectors

EXECUTIVE AND PROGRAM COMMITTEES

www.nareim.org/committees

STAFF

Reesa Fischer

CEO

rfischer@nareim.org

IvyLee Rosario

Head of Programs

irosario@nareim.org

Marynia Kruk

Meeting Producer

mkruk@nareim.org

Alexandria Gonzalez

Event Manager

agonzalez@nareim.org

WHY NAREIM?

NAREIM™ (the National Association of Real Estate Investment Managers™) is a unique association in the real estate investment management industry.

We provide unrivalled access to benchmarking data and best practices that helps management teams scale and grow their organizations. In an environment of increasing complexity, diversity of product offerings and rising expenses, management teams need to understand what strategies work — and which provide the greatest return on investment.

Through research, best practice education and networking, NAREIM offers a safe space for managers to candidly discuss insights and ideas, and to learn from one another what it takes to be best in class.

NAREIM™

The National Association of Real Estate Investment Managers™

1021 Broad St. #1096,
Shrewsbury, NJ 07702

www.nareim.org